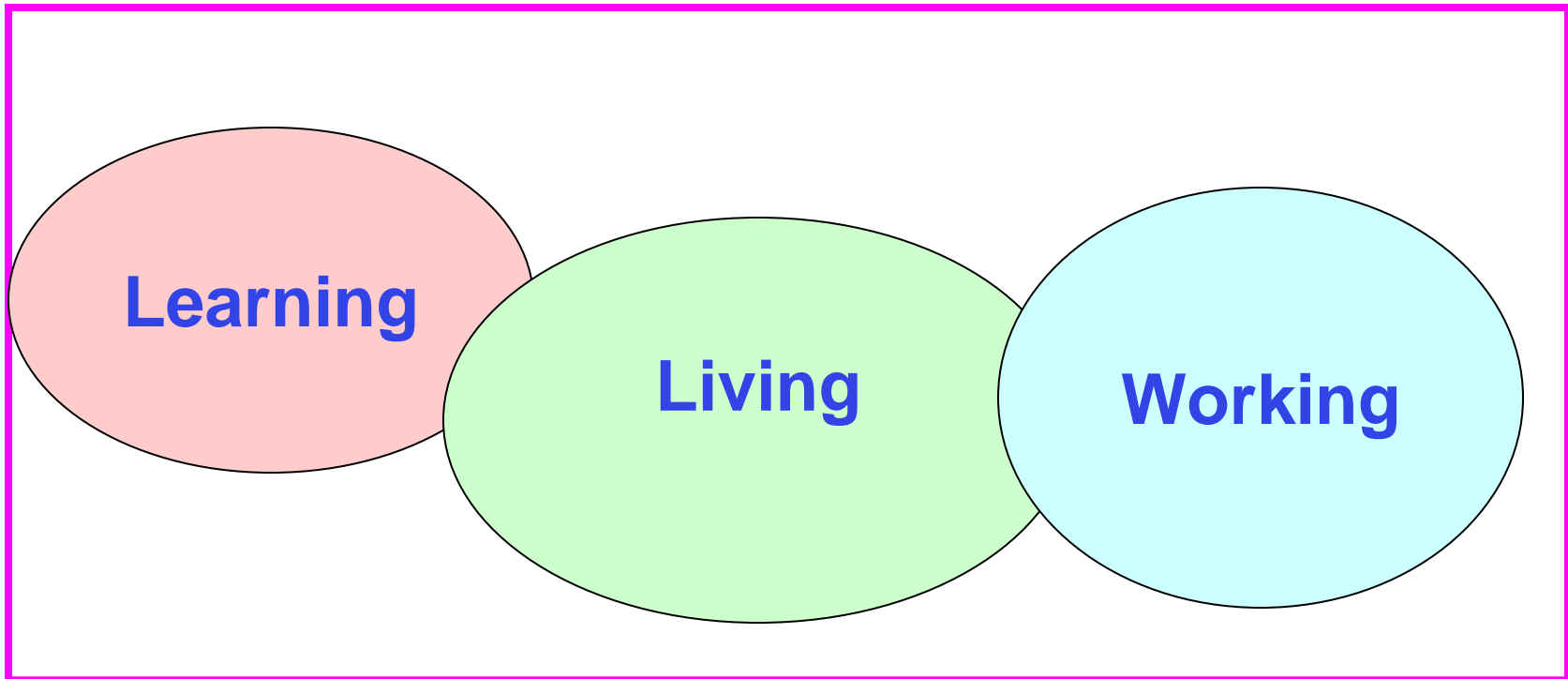
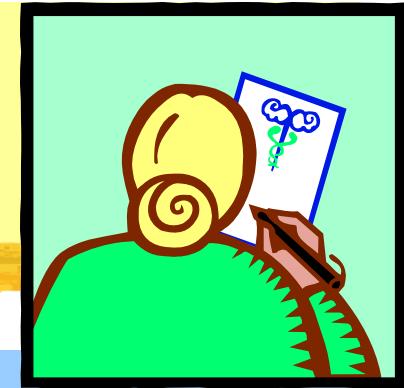


# Identity shaped by Hearing Loss



# Hearing Loss

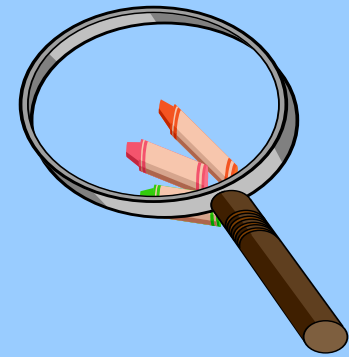


- ⌘ Is more than a physical condition.
- ⌘ It affects identity, levels of participation and communication, and, sometimes/often choices.
- ⌘ Caveat: The extent of the impact varies according to the person.



# Variations due to

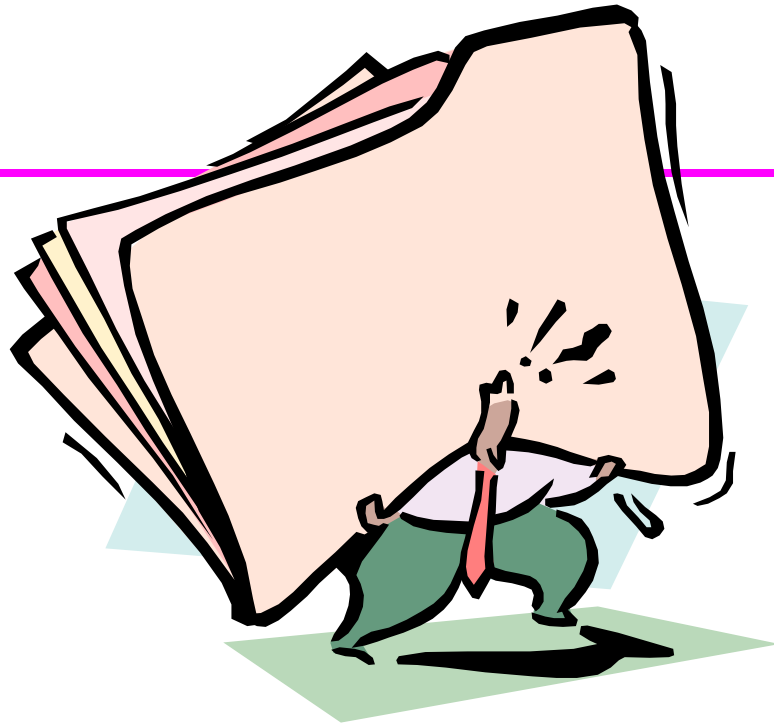
- ⌘ Individual makeup
- ⌘ Age of onset of the hearing loss
- ⌘ Degree of hearing loss
- ⌘ Extent of support services
- ⌘ Prevalence of other disabilities
- ⌘ Existence of other factors e.g. language of dominant culture not primary, social class, ethnicity, gender



# Invisible Nature

- ⌘ Not obvious who is and who is not Hoh by looking at a person
- ⌘ Result is that hoh persons may “pass” for being hearing and this is often encouraged by others.
- ⌘ **“I always said I was hearing when I was growing up. I faked it.”**
- ⌘ Downside: “passing” affects identity and access services.

# Introverted Response



# Introverted Response

*All of my life I have been hard of hearing. I have been extremely selective about my friends to the point where I don't have very many. I don't go to movies with anybody. I rarely go for coffee with people. I am always working and I use the excuse I don't have any time. (Charlie)*



# Extroverted Response



# Extroverted Response

*Carol: I play on  
the University X rugby team..  
It was really difficult  
when I first started  
It's a matter of  
watching and guessing.*





# Communication Tips

Communication enhanced by

- ⌘ Facing the person
- ⌘ Speaking at usual rate of speech
- ⌘ Providing communication guideposts
- ⌘ Choosing locations that are acoustically friendly





## Communication Tips

- ⌘ Provide time for interaction
- ⌘ Hoh persons experience conversational lag and timing issues in hearing.
- ⌘ Described as “the visitor syndrome”

“By the time I hear it, the opportunity to participate is gone.”

Thank you



**E-mail: [ruth.warick@ubc.ca](mailto:ruth.warick@ubc.ca)**