

Gray Areas of Ethics –

Deaf Professionals and

Interpreters

Denise Thew, Ph.D, MSCI

# Dual/Multiple and Overlapping Relationships

- \*What is dual relationship?
- \*What is overlapping relationship?
- \*Discuss examples

# Dual/Multiple Relationships

Some may ask what makes multiple relationships problematic.

Schank and Skovholt (2006) pointed out several critical factors:

- \* 1) they are pervasive,
- \* 2) they are difficult to recognize,
- \* 3) they sometimes are unavoidable,
- \* 4) they are the subject of limited advice,
- \* 5) they are potentially harmful,
- \* 6) they involve risk to clients and to psychologists,
- \* 7) they have effects on other consumers, other professionals, the profession, and society (p. 36-42).

## NEGOTIATING THE GRAY AREAS OF ETHICAL DECISION MAKING: DEAF THERAPISTS WORKING IN THE DEAF COMMUNITY (Thew, 2010)

The study:

- Many DHH therapists reported that the APA ethical principles and codes do not often allow much freedom to participate in many events organized in the DHH communities
- Explored decision-making patterns
  - All multiple relationships in the study are nonsexual
- Differentiate the concepts of overlapping and dual relationships
- Developed an ethical decision-making model to use with Deaf therapists
  - Documented the importance of a collaboration discussion with patient/client
    - Important part of Deaf culture value (subtle vs direct)
      - Reduces the likelihood of distrust at pt feels respected/valued

# Dual/Multiple Relationships (from study)

- \* Potential for exploitation or conflict in the roles
- \* Implicitly harmful
- \* Common in rural and small communities due to limited access to services/options
  - \* DHH community
    - \* Every deaf person is considered a potential client if not already a client

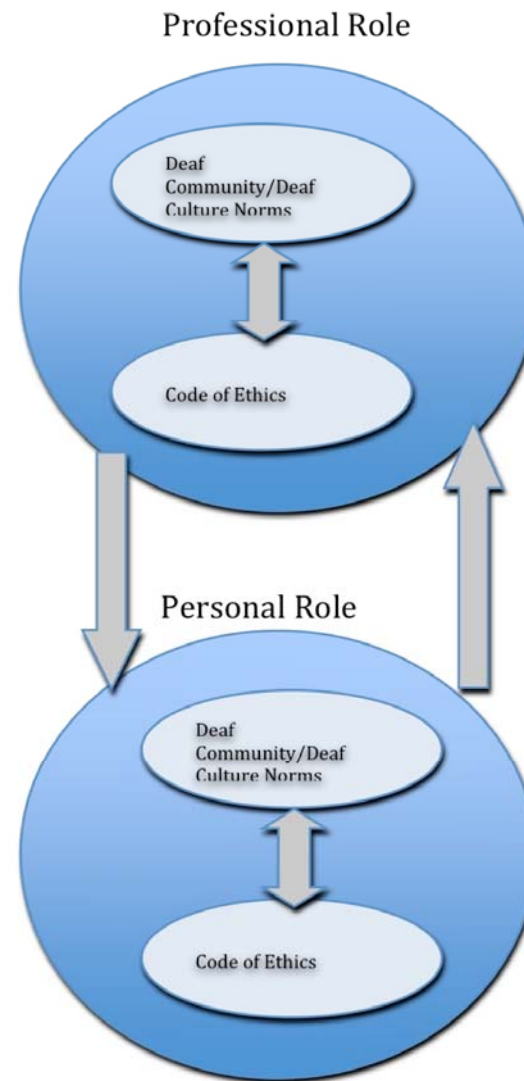
# Overlapping Relationships (from study)

- \* New concept for many
- \* Broadly defined as:
  - \* Common interest or activity outside of therapy or work
    - \* E.g., political, religious, social endeavor
- \* Minimal or no potential for exploitation or role conflicts

# NEGOTIATING THE GRAY AREAS OF ETHICAL DECISION MAKING: DEAF THERAPISTS WORKING IN THE DEAF COMMUNITY (Thew, 2010)

- \* Professional vs. personal self
  - \* Diagram
  
- \* Decision-making model
  - \* Flowchart

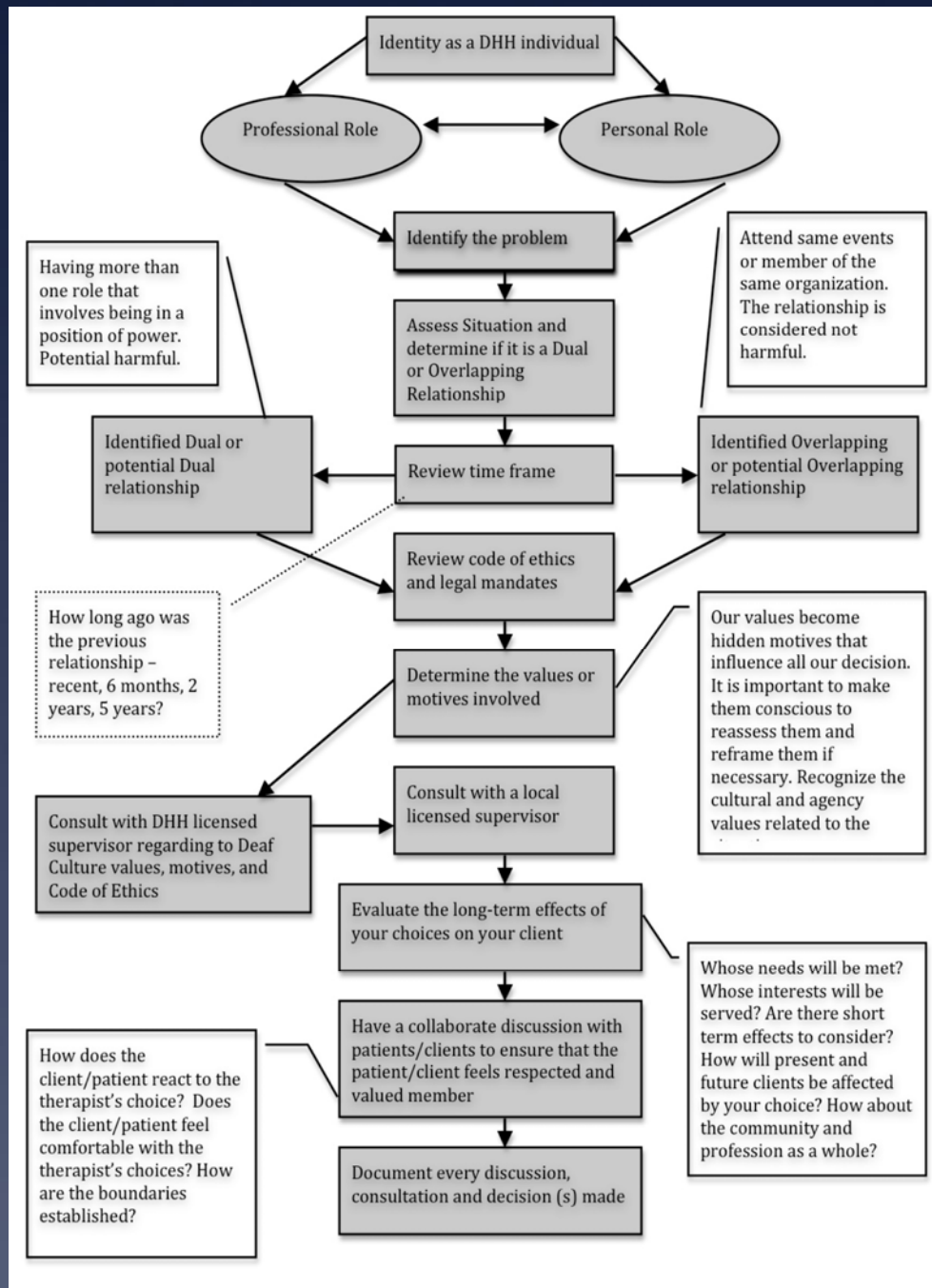
# Interactions of Deaf Culture and Code of Ethics within the Professional and Personal Role.



Copyright: Thew (2010)



# Proposed Decision-Making Model for Deaf Therapists who work in the DHH Community.



# Conclusion

(from study)

- **Strive to achieve healthy balance in both personal and professional roles**
  - Multiple shades of gray
- **Proposed decision-making model derived from this study can be modified** to meet the needs of other small communities in other professions
- **Quality supervision is critical**
  - Cross state supervision is prohibited by most state ethical board
  - Many Deaf professionals would benefit from VP supervision/consultation

# Group Discussion

- \* Where do Deaf professionals go for support?
- \* Where do interpreters go for support?
- \* Who can you talk with to ensure that you maintain your professional ethics?
- \* What is the missing piece of puzzle for your small community? (e.g. Deaf professionals, interpreters, etc)
  - \* What resources do you need to accomplish this?

# Thank You!!!

(reminder to self to insert picture of some kind 😊  
before presentation)